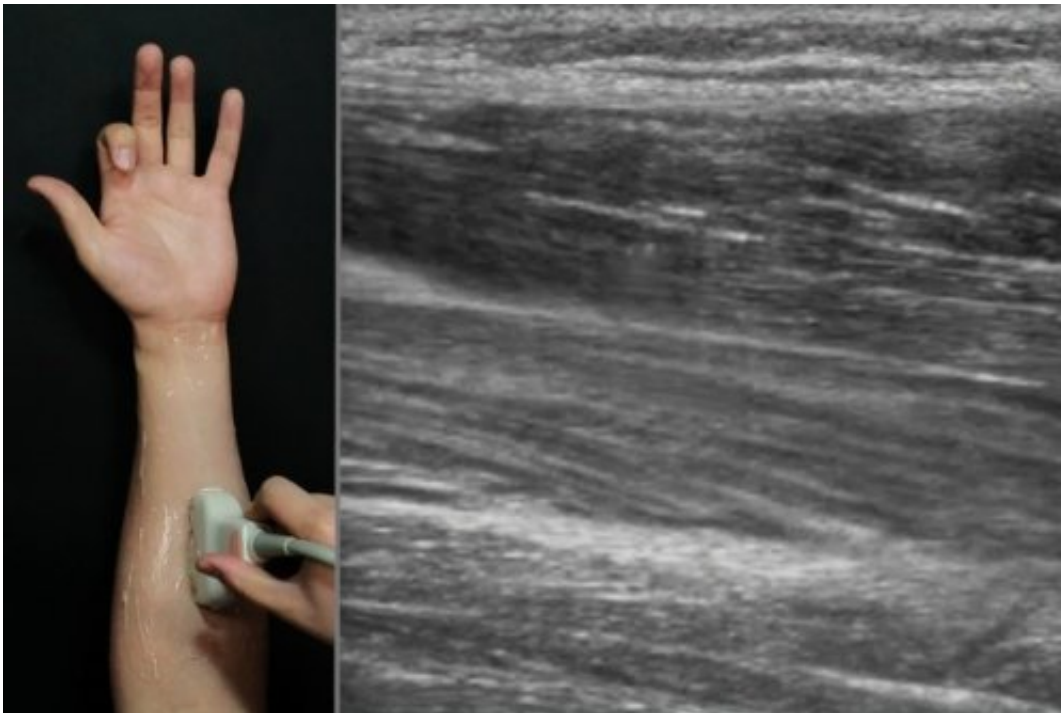


Future smartwatches could sense hand movement using ultrasound imaging

October 11 2017



Credit: BIG, University of Bristol

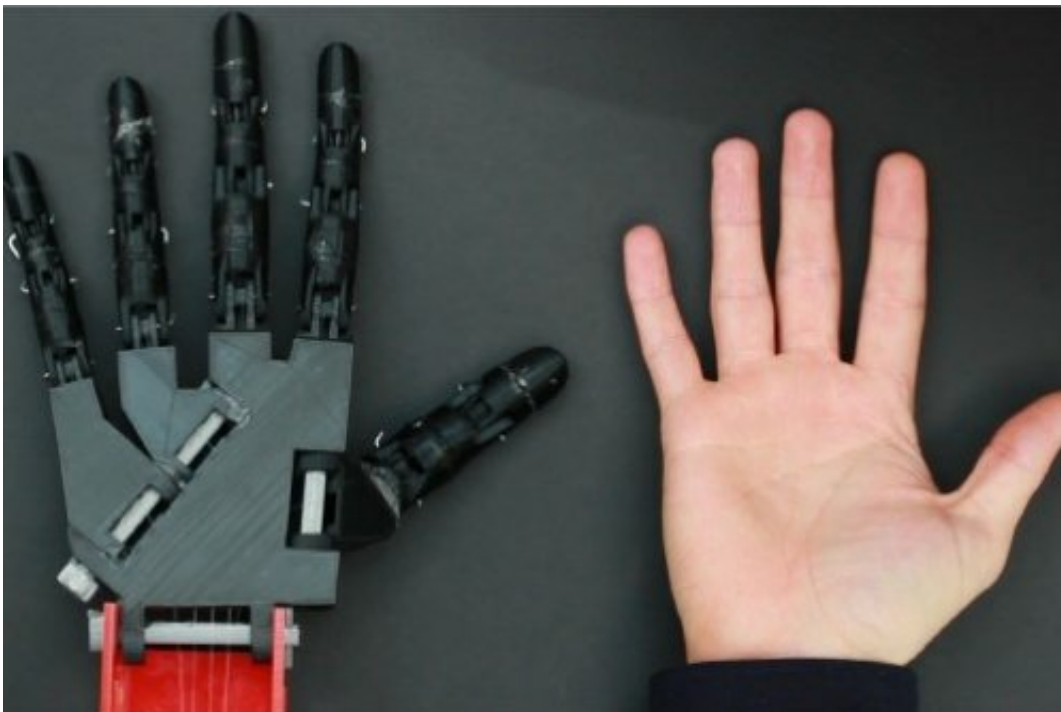
New research has shown future wearable devices, such as smartwatches, could use ultrasound imaging to sense hand gestures.

The research team led by Professor Mike Fraser, Asier Marzo and Jess McIntosh from the Bristol Interaction Group (BIG) at the University of Bristol, together with University Hospitals Bristol NHS Foundation Trust

(UH Bristol), presented their paper this summer [8-11 May] at one of the world's most important conferences on human-computer interfaces, ACM CHI 2017 held in Denver, USA.

Computers are growing in number and wearable computers, such as smartwatches, are gaining popularity. Devices around the home, such as WiFi light bulbs and smart thermostats, are also on the increase. However, current technology limits the capability to interact with these devices.

Hand gestures have been suggested as an intuitive and easy way of interacting with and controlling smart devices in different surroundings. For instance, a gesture could be used to dim the lights in the living room, or to open or close a window. Hand [gesture](#) recognition can be achieved in many ways, but the placement of a sensor is a major restriction and often rules out certain techniques. However, with smartwatches becoming the leading wearable [device](#) this allows sensors to be put in the watch to sense [hand movement](#).



Credit: BIG, University of Bristol

The research team propose [ultrasonic imaging](#) of the forearm could be used to recognise [hand gestures](#). Ultrasonic imaging is already used in medicine, such as pregnancy scans along with muscle and tendon movement, and the researchers saw the potential for this to be used as a way of understanding [hand](#) movement.

The team used image processing algorithms and machine learning to classify muscle movement as gestures. The researchers also carried out a user study to find the best sensor placement for this technique.

The team's findings showed a very high recognition accuracy, and importantly this sensing method worked well at the wrist, which is ideal as it allows future wearable devices, such as smartwatches, to combine this ultrasonic technique to sense gestures.

Jess McIntosh, PhD student in the Department of Computer Science and BIG Group, said: "With current technologies, there are many practical issues that prevent a small, portable ultrasonic imaging sensor integrated into a smartwatch. Nevertheless, our research is a first step towards what could be the most accurate method for detecting hand gestures in smartwatches."

More information: Jess McIntosh et al. EchoFlex, *Proceedings of the 2017 CHI Conference on Human Factors in Computing Systems - CHI '17* (2017). [DOI: 10.1145/3025453.3025807](https://doi.org/10.1145/3025453.3025807)

Provided by University of Bristol

Citation: Future smartwatches could sense hand movement using ultrasound imaging (2017, October 11) retrieved 18 April 2024 from <https://techxplore.com/news/2017-10-future-smartwatches-movement-ultrasound-imaging.html>

This document is subject to copyright. Apart from any fair dealing for the purpose of private study or research, no part may be reproduced without the written permission. The content is provided for information purposes only.