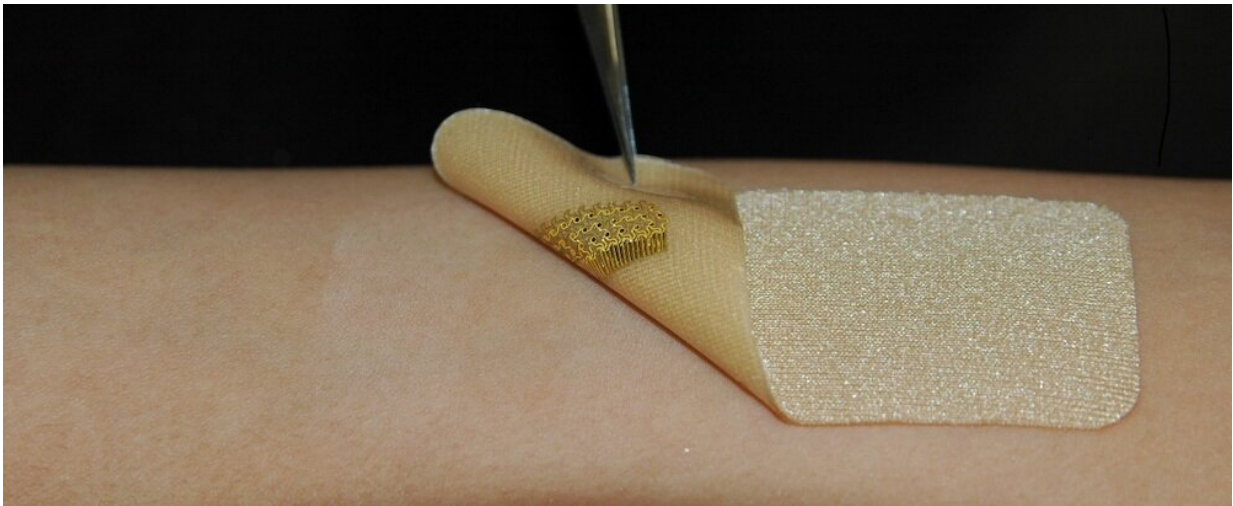


# Wearable sensors mimic skin to help with wound healing process

April 2 2019

---



The sensor on a textile-silicon bandage. Credit: Matthew Brown

Researchers at Binghamton University, State University of New York, have developed skin-inspired electronics to conform to the skin, allowing for long-term, high-performance, real-time wound monitoring in users.

"We eventually hope that these sensors and engineering accomplishments can help advance healthcare applications and provide a better quantitative understanding in [disease progression](#), wound care, general health, fitness monitoring and more," said Matthew Brown, a

Ph.D. student at Binghamton University.

Biosensors are analytical devices that combine a biological component with a physiochemical detector to observe and analyze a [chemical substance](#) and its reaction in the body. Conventional biosensor technology, while a great advancement in the medical field, still has limitations to overcome and improvements to be made to enhance their functionality. Researchers at Binghamton University's Intimately Bio-Integrated Biosensors lab have developed a skin-inspired, open-mesh electromechanical sensor that is capable of monitoring lactate and oxygen on the skin.

"We are focused on developing next-generation platforms that can integrate with biological tissue (e.g. skin, neural and cardiac tissue)," said Brown. Under the guidance of Assistant Professor of Biomedical Engineering Ahyeon Koh, Brown, master's students Brandon Ashely and Youjoong Park, and undergraduate student Sally Kuan designed a sensor that is structured similarly to that of the skin's micro architecture. This [wearable sensor](#) is equipped with gold sensor cables capable of exhibiting similar mechanics to that of skin elasticity.

The researchers hope to create a new mode of sensor that will meld seamlessly with the wearer's body to maximize body analysis to help understand chemical and physiological information.

"This topic was interesting to us because we were very interested in real-time, on-site evaluation of wound healing progress in a near future," said Brown. "Both lactate and oxygen are critical biomarkers to access wound-healing progression."

They hope that future research will utilize this [skin](#)-inspired sensor design to incorporate more biomarkers and create even more multifunctional sensors to help with wound healing. They hope to see

these [sensors](#) being developed incorporated into [internal organs](#) to gain an increased understanding about the diseases that affect these organs and the human body.

"The bio-mimicry structured sensor platform allows free mass transfer between biological tissue and bio-interfaced electronics," said Koh.

"Therefore, this intimately bio-integrated sensing system is capable of determining critical biochemical events while being invisible to the biological system or not evoking an [inflammatory response](#)."

The paper, "Skin-inspired, Open Mesh Electrochemical Sensors for Lactate and Oxygen Monitoring," was published in *Biosensors and Bioelectronics*.

**More information:** Brandon K. Ashley et al, Skin-inspired, open mesh electrochemical sensors for lactate and oxygen monitoring, *Biosensors and Bioelectronics* (2019). [DOI: 10.1016/j.bios.2019.02.041](https://doi.org/10.1016/j.bios.2019.02.041)

Provided by Binghamton University

Citation: Wearable sensors mimic skin to help with wound healing process (2019, April 2) retrieved 10 April 2024 from <https://techxplore.com/news/2019-04-wearable-sensors-mimic-skin-wound.html>

<p>This document is subject to copyright. Apart from any fair dealing for the purpose of private study or research, no part may be reproduced without the written permission. The content is provided for information purposes only.</p>
--