

Virtual demolition

June 18 2020



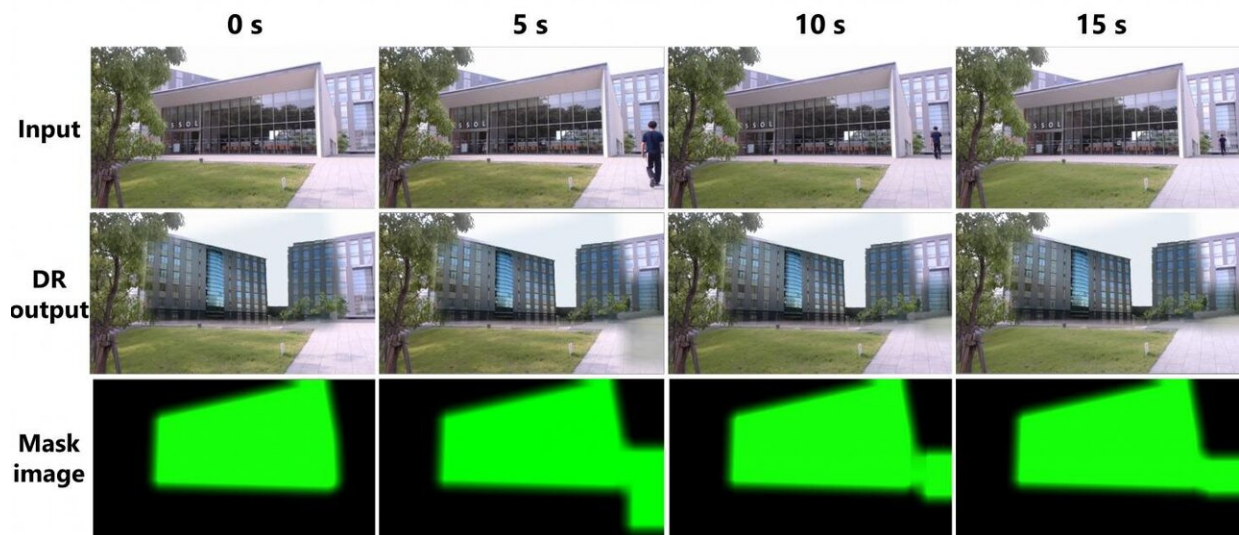
Proposed "diminished reality" (DR) system. Left: Input image captured by a web camera showing the current situation. Right: DR output image of the future landscape. A moving object (pedestrian) has been virtually removed in real-time along with the immobile building. Credit: Osaka University

Researchers at Osaka University demonstrated a prototype for real-time augmented reality that can virtually remove both static structures as well as moving objects. This work can be used to visualize future landscapes after urban renovations without interference from passing cars or pedestrians.

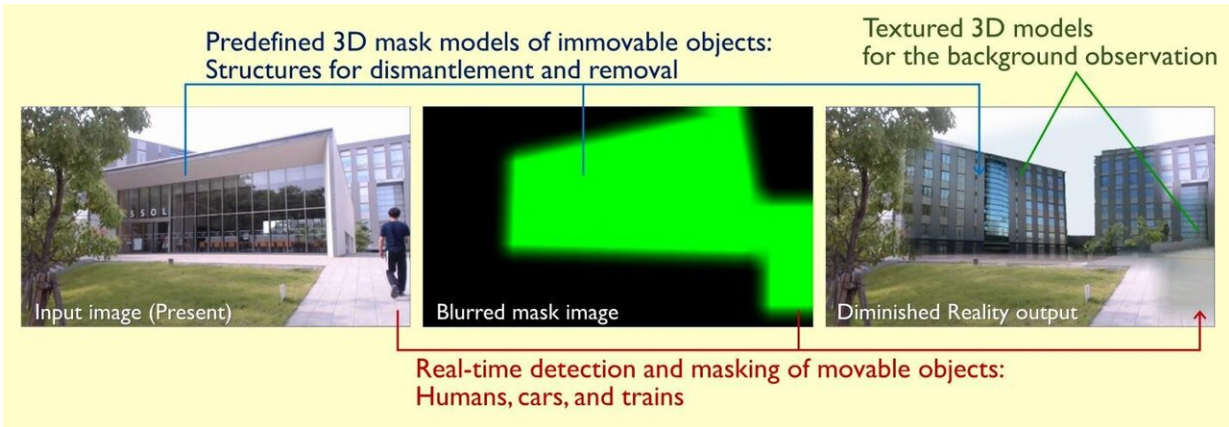
Augmented reality, the ability for simulated images to be projected virtually over pictures of actual locations in real time, has been used for both immersive games like Pokémon Go as well as [practical applications](#) such as construction planning. As the 'augmented' in the name implies,

characters or buildings are usually added to scenes, since virtually removing objects to show what lies behind them is a much more computationally intensive task. However, this is exactly what is needed to plan for demolition, or to see what a landscape would look like after removing distracting moving vehicles or pedestrians from scenes.

Now, researchers at the Division of Sustainable Energy and Environmental Engineering at Osaka University have developed such a system. Their prototype combines deep learning with a video game graphics engine to create [real-time](#) landscapes that can virtually remove buildings, trees, or even moving objects, to show the view of the background previously obscured. "Previously, it has not been possible to visually remove moving objects, such as vehicles and pedestrians, from real-time landscape simulations," corresponding author Tomohiro Fukuda says.



DR timeline (0-15 s). A pedestrian is walking toward the building, but he is always virtually removed. Credit: Osaka University



How the DR system works. In the input video captured by the web camera, moving objects such as the pedestrian are detected by deep learning, and are masked along with immobile objects like the building and virtually removed. Credit: Osaka University

To simulate the removal of large immobile structures, like a building to be demolished, the method dynamically blends photographs of the background behind the building based on the current viewpoint of the camera. For moving objects, like passing cars, a machine-learning algorithm can automatically detect and mask the region they obscure, to be replaced with the appropriate current or future scene. To test the [prototype system](#), the team tried it out on the campus of Osaka University. They found it could automatically detect and remove cars and pedestrians from the image.

"Diminished reality can dynamically remove distractions from our landscapes," Fukuda says.

This research may be used for planning purposes whenever renovations become necessary.

More information: Daiki Kido et al, Diminished reality system with real-time object detection using deep learning for onsite landscape simulation during redevelopment, *Environmental Modelling & Software* (2020). [DOI: 10.1016/j.envsoft.2020.104759](https://doi.org/10.1016/j.envsoft.2020.104759)

Provided by Osaka University

Citation: Virtual demolition (2020, June 18) retrieved 25 April 2024 from <https://techxplore.com/news/2020-06-virtual-demolition.html>

This document is subject to copyright. Apart from any fair dealing for the purpose of private study or research, no part may be reproduced without the written permission. The content is provided for information purposes only.