

# Newly found Fukushima plant contamination may delay cleanup

January 27 2021, by Mari Yamaguchi

---



This Sept. 4, 2017, aerial file photo shows Fukushima Dai-ichi nuclear power plant's reactors, from bottom at right, Unit 1, Unit 2 and Unit 3, in Okuma, Fukushima prefecture, northeastern Japan. A draft investigation report into the 2011 Fukushima nuclear meltdown, adopted by Japanese nuclear regulators Wednesday, Jan. 27, 2021, says it has detected dangerously high levels of radioactive contamination at two of the three reactors, adding to concerns about decommissioning challenges. The interim report said data collected by investigators showed that the sealing plugs sitting atop the No. 2 and 3 reactor

containment vessels were as fatally contaminated as nuclear fuel debris that had melted and fell to the bottom of the reactors following the March 2011 tsunami and earthquake. (Daisuke Suzuki/Kyodo News via AP, File)

A draft investigation report into the 2011 Fukushima nuclear meltdown, adopted by Japanese nuclear regulators Wednesday, says it has detected dangerously high levels of radioactive contamination at two of the three reactors, adding to concerns about decommissioning challenges.

The interim report said data collected by investigators showed that the sealing plugs sitting atop the No. 2 and 3 [reactor](#) containment vessels were as fatally contaminated as nuclear fuel debris that had melted and fell to the bottom of the reactors following the March 2011 tsunami and earthquake.

The experts said the bottom of the sealed plug, a triple-layered concrete disc-shaped lid 12 meters (39 feet) in diameter sitting atop the primary containment vessel, is coated with high levels of radioactive Cesium 137.

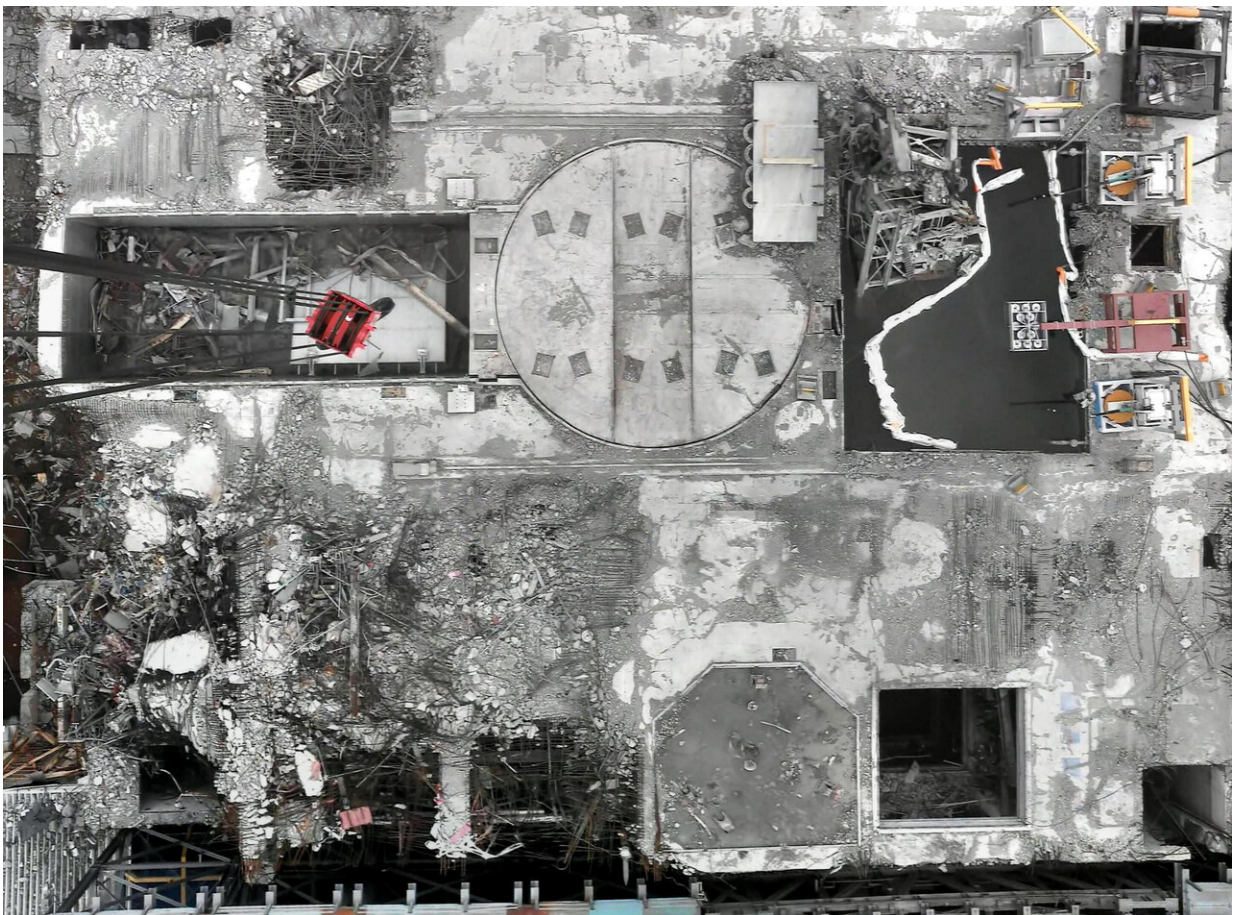
The No. 1 reactor lid was less contaminated, presumably because the plug was slightly knocked out of place and disfigured due to the impact of the hydrogen explosion, the report said.

The experts measured radiation levels at multiple locations inside the three reactor buildings, and examined how radioactive materials moved and [safety equipment](#) functioned during the accident. They also said venting attempt at Unit 2 to prevent reactor damage never worked, and that safety measures and equipment designs still need to be examined.

The lid contamination does not affect the environment as the containment vessels are enclosed inside the reactor buildings. The report

did not give further details about if or how the lid contamination would affect the decommissioning progress.

Nuclear Regulation Commission Chairman Toyoshi Fuketa called the findings "extremely serious" and said they would make melted fuel removal "more difficult." He said figuring out how to remove the lids would be a major challenge.



This Jan. 31, 2014, image released by Tokyo Electric Power Company Holdings shows the aerial view of the No. 3 reactor, with its roof blown off and shield plug (circle in the middle) exposed, in Okuma town, Fukushima prefecture, northeastern Japan. A draft investigation report into the 2011 Fukushima nuclear meltdown, adopted by Japanese nuclear regulators Wednesday, Jan. 27, 2021,

says it has detected dangerously high levels of radioactive contamination at two of the three reactors, adding to concerns about decommissioning challenges.(Tokyo Electric Power Company Holdings via AP)

Removing an estimated 900 tons of melted fuel debris from three reactors is a daunting task expected to take decades, and officials have not been able to describe exactly when or how it may end.

The Fukushima plant was to start removing melted fuel debris from Unit 2, the first of three reactors, later this year ahead of the 10th anniversary of the accident. But in December, plant operator Tokyo Electric Power Co. and the government announced a delay until 2022. They said the development of a robotic arm for the debris removal—a joint project with Britain—has been delayed due to the pandemic.

Under the current plan, a remote-controlled robotic arm will be inserted from the side of the reactor to reach the molten [fuel](#) mixed with melted parts and concrete floor of the reactor. Eventually the lids also would have to be removed, but their contamination is a major setback.

The team of experts entered areas inside the three reactors that were previously highly contaminated and inaccessible after radiation levels came down significantly. They're seeking data and evidence before they get lost in the cleanup.

Massive radiation from the reactors has caused some 160,000 people to evacuate from around the plant. Tens of thousands are still unable to return home.

© 2021 The Associated Press. All rights reserved. This material may not be published, broadcast, rewritten or redistributed without permission.

Citation: Newly found Fukushima plant contamination may delay cleanup (2021, January 27)  
retrieved 17 April 2024 from  
<https://techxplore.com/news/2021-01-newly-fukushima-contamination-cleanup.html>

This document is subject to copyright. Apart from any fair dealing for the purpose of private study or research, no part may be reproduced without the written permission. The content is provided for information purposes only.