

# Researchers demonstrate drone autonomy technology at 2021 EnRicH hackathon

November 18 2021

---



A drone using autonomy software developed by Southwest Research Institute navigated an inoperable nuclear facility, during the October 2021 EnRicH hackathon. Using LIDAR data and exploration algorithms, SwRI built a map of the test facility by simultaneously localizing and mapping the environment. Credit: SwRI

During the EnRicH 2021 European Robotics Hackathon, Southwest Research Institute's unmanned aircraft system (UAS) explored and mapped the interior of a nuclear power plant, detecting radiation sources—autonomously without the aid of a human pilot. SwRI's UAS, or drone, technology can potentially assist in life-saving search-and-rescue missions and hazardous inspections at industrial facilities and infrastructure following natural disasters and other incidents.

The hackathon took place Oct. 4-8 in Austria's Zwentendorf Nuclear Power Plant, the only nuclear facility that has been completely built but never activated. The inoperable boiling water reactor plant serves as a training ground to prepare for radiological and nuclear incidents and disaster scenarios.

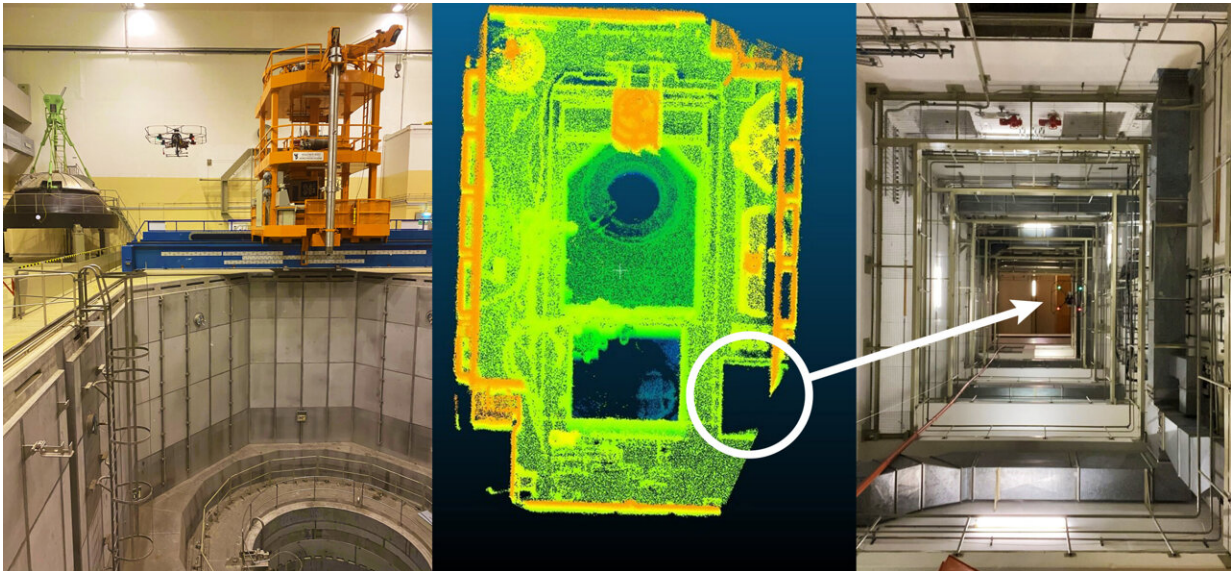
"Today's drones and ground robots typically require a lot from a [human operator](#)," said Eric Thorn, manager of SwRI's UAS research team. "The autonomy we've demonstrated has the potential to significantly reduce the burden on human operators, allowing robotic systems to act independently and operate themselves."

Developed and tested through internally funded research, SwRI's technology combines new algorithms with computer vision sensors to allow drones to autonomously explore and map previously unknown environments.

"We've developed a full autonomy stack that can be paired with a variety of sensors and UAS platforms to perform critical missions," Thorn said.

SwRI's EnRicH entry featured a four-axis drone equipped with several sensors—light detection and ranging (LIDAR), a time-of-flight camera and radiation detectors. The team utilized both on-drone processors and ground-based processing to perform simultaneous localization and mapping (SLAM), exploration, decision-making, autopilot, computer

vision analysis, sensing and other tasks.



From left, the SwRI drone hovers next to an orange crane used to lower fuel rods into a primary containment vessel. Middle, a LIDAR image shows the drone's point of view as it hovers above the containment vessel entrance (blue/green circle) and crane (orange rectangle). The dark rectangle at bottom right is a ventilation shaft. Right, the drone flew in the ventilation shaft, traveling 40 feet vertically to the area housing the crane. A radiation detector aboard the drone identified Cobalt-60, a radioisotope, in a red pipe located in the shaft. Credit: SwRI

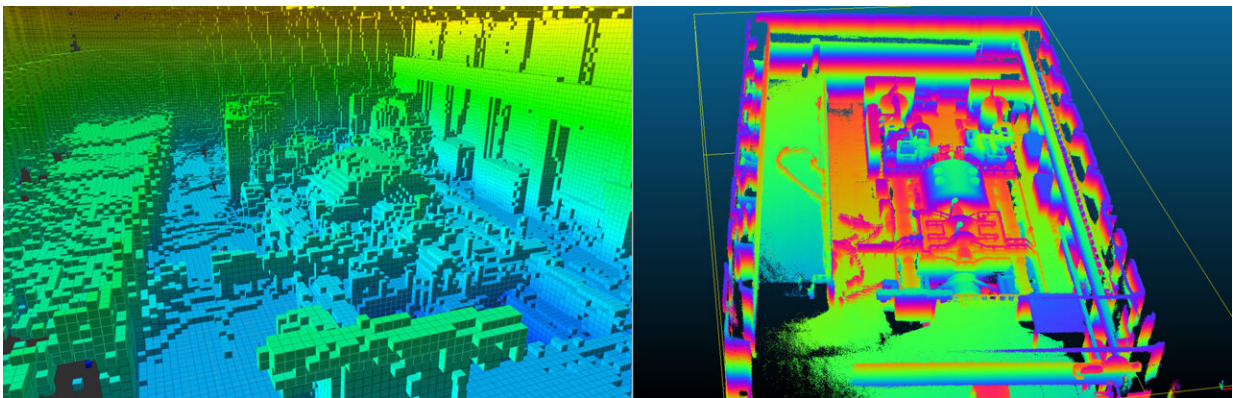
Using algorithms and modeling tools, the technology maps the spatial topography of internal structures and open spaces in real-time. Fusing data from computer vision [sensors](#), the [technology](#) maps routes as it explores new locations. Perception techniques to detect people, vehicles and other objects are also available based on convolutional neural networks (CNNs).

"We demonstrated our exploratory planner, which enables the system to

map and navigate new spaces without the aid of human operators, which performed well despite a challenging environment," said Chris Bang, an SwRI program manager in the Intelligent Systems Division. "The exploratory planner is proving itself in both man-made environments and in natural environments such as caves."

During the EnRicH hackathon, the [drone](#) autonomously detected two sources of cobalt-60, a radioisotope, hidden in separate locations as part of a pre-planned challenge. Participants had no prior information about the facility, or the exploration challenges created by a panel of judges.

"The planner showed robust flexibility, adeptly operating in previously unknown environments," Bang added. "It proved its ability to adapt, learn and perform tasks in real-time, which is crucial in time-critical search-and-rescue and hazardous scenarios."



SwRI engineers used LIDAR point cloud data to reconstruct a high-resolution image of a facility that houses electric turbines at the nuclear power plant. 3D cubes, or voxels, on the left provide spatial information on the turbine facility. Several voxel images were used to create the high-resolution image of turbines on the right. SwRI specializes in data visualizations to identify damage and potential hazards following accidents at nuclear power plants and other hazardous facilities. Credit: SwRI

SwRI's autonomy stack has been used in everything from commercial and military connected and autonomous ground vehicles to automated drones and intelligent agricultural equipment. It leverages open-source tools such as the robot operating system (ROS) and proprietary machine learning algorithms and artificial intelligence.

**More information:** For more information, visit <https://www.swri.org/unmanned-aircraft-systems>

Provided by Southwest Research Institute

Citation: Researchers demonstrate drone autonomy technology at 2021 EnRicH hackathon (2021, November 18) retrieved 30 September 2023 from <https://techxplore.com/news/2021-11-drone-autonomy-technology-enrich-hackathon.html>

This document is subject to copyright. Apart from any fair dealing for the purpose of private study or research, no part may be reproduced without the written permission. The content is provided for information purposes only.