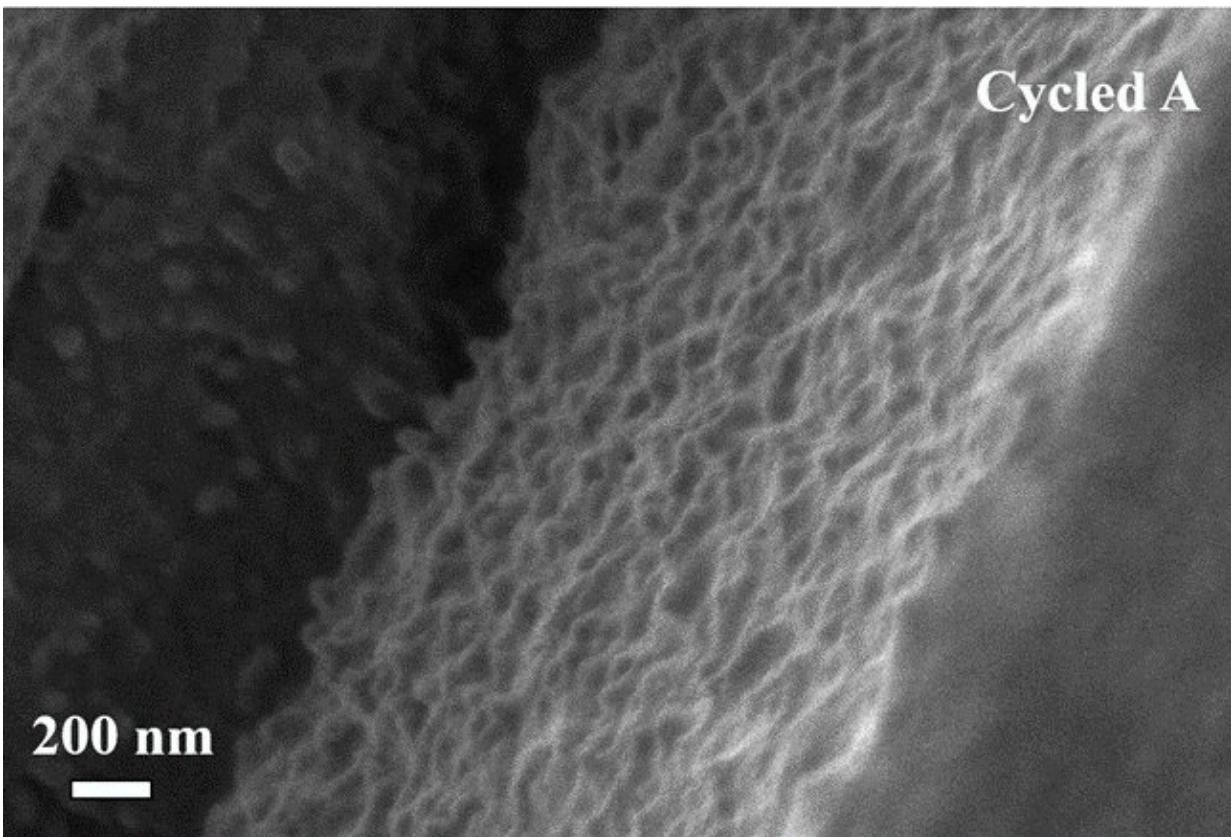


# Self-standing mesoporous Si film can power lithium-ion batteries

March 31 2022

---



SEM image of the cross-section of the optimal Si film electrode after cycling.  
Credit: Vesa-Pekka Lehto

This film electrode does not need carbon additives and binders to connect particles like typical slurry-based electrodes, but it still exhibits

excellent battery performance. The success of this electrode design provides an efficient strategy for achieving high energy density lithium-ion batteries.

The development of high performance lithium-ion batteries has been highly desirable due to their wide applications in portable electronics and in electric and [hybrid vehicles](#). Silicon is the most promising [anode material](#) for next-generation lithium-ion batteries due to its high theoretical specific capacity and safe electrochemical potential. However, Si anode suffers from large volume expansion and contraction during cycling that causes electrical contact loss between [silicon](#) and other [battery](#) components, eventually leading to battery failure.

Battery researchers from all over the world have been dedicating their efforts to improving Si electrode performance, including researchers at the University of Eastern Finland. Using the electrochemical etching method, they developed a self-standing mesoporous Si film anode for lithium-ion batteries. The idea is that the pores of mesoporous silicon can accommodate the volume expansion during cycling, thus leading to stable battery cycling. They systematically investigated the effects of pore characteristics on electrode performance using [correlation analysis](#) and uncovered their relationship.

Detailed pore analysis and electrochemical characterization of the Si films were performed to study their correlation. Correlation analysis showed that both reversible specific capacity and initial Coulombic efficiency (ICE) have a strong negative correlation with the porosity and surface area, while the cycling performance is dictated by the film thickness over the pore characteristics. The only positive correlation was found between the long-term cycling stability and the pore diameter. The best Si film anode delivers an ICE of 81.2% and stable cycling for over 450 cycles with a limited specific capacity of 1200 mAh g<sup>-1</sup> in half cells.

The study, published in the *Journal of Power Sources*, indicates the direction of the porous silicon material for high-performance [lithium-ion batteries](#). More importantly, it provides battery researchers, especially those exploring the Si anode, with a better understanding of the factors involved in evaluating the electrode performance and developing more cost-effective evaluation strategies for battery research.

**More information:** Xiuyun Zhao et al, Self-standing mesoporous Si films as anodes for lithium-ion microbatteries, *Journal of Power Sources* (2022). [DOI: 10.1016/j.jpowsour.2022.231269](https://doi.org/10.1016/j.jpowsour.2022.231269)

Provided by University of Eastern Finland

Citation: Self-standing mesoporous Si film can power lithium-ion batteries (2022, March 31) retrieved 25 April 2024 from <https://techxplore.com/news/2022-03-self-standing-mesoporous-si-power-lithium-ion.html>

<p>This document is subject to copyright. Apart from any fair dealing for the purpose of private study or research, no part may be reproduced without the written permission. The content is provided for information purposes only.</p>
--