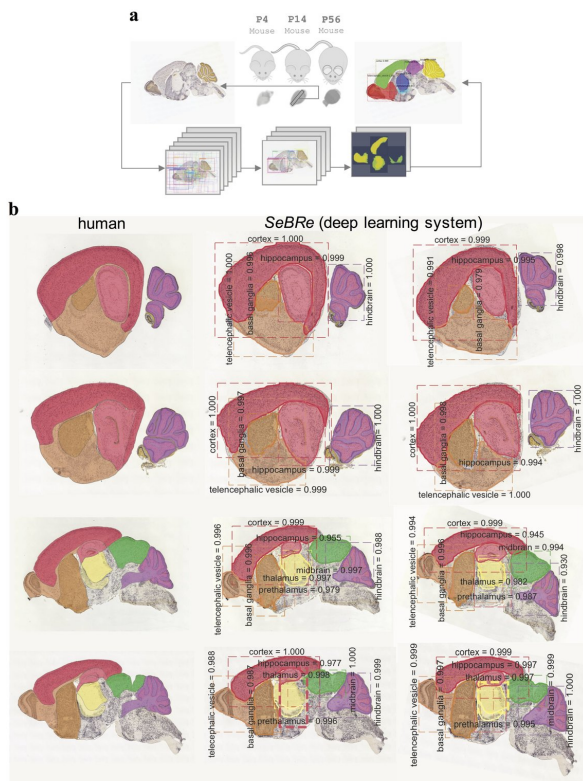


# Developing brain atlas using deep learning algorithms

23 July 2018, by Ingrid Fadelli



**Fig. 1 | Block Diagram and performance of SeBRe.** a, Block diagram architecture of SeBRe. Brain sections (left) are fed as input to the Mask RCNN and the output (right) shows the segmented (registered) brain regions on top of the input brain section. b, Qualitative performance comparison of SeBRe on lateral (rows 1-2) and medial (rows 3-4) brain sections with human-annotated masks. SeBRe performs optimally on predicting masks of brain regions, for both upright (column 2) and rotated (column 3) versions of input brain sections.

Block Diagram and performance of SeBRe. a. Block diagram architecture of SeBRe. Brain sections (left) are fed as input to the Mask RCNN and the output (right) shows the segmented (registered) brain regions on top of the input brain section. b. Qualitative performance comparison of SeBRe on lateral (rows 1-2) and medial (rows 3-4) brain sections with human-annotated masks. SeBRe performs optimally on predicting masks of brain regions, for both upright (column 2) and rotated (column 3) versions of input brain sections. Credit: Theofanis Karayannis et al.

A team of researchers from the Brain Research Institute of the University of Zurich and the Swiss

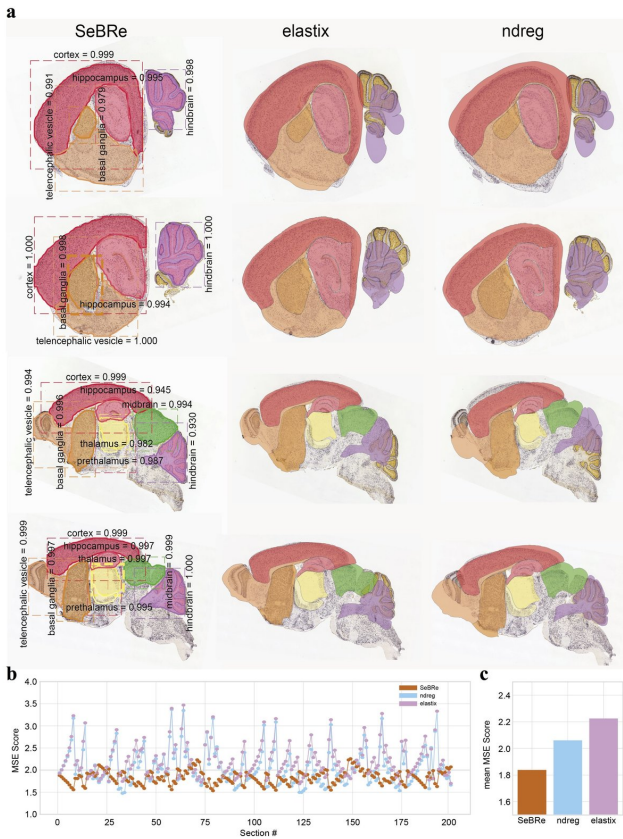
Federal Institute of Technology (ETH) have developed a fully automated brain registration method that could be used to segment brain regions of interest in mice.

Neuroscientists are always seeking out new methods of exploring the structure and function of different brain regions, which are initially applied on animals but could eventually lead to important discoveries about the organization of the human brain.

"My lab aims to reveal how the mammalian brain develops its abilities to process and react to sensory stimuli," Theofanis Karayannis, one of the researchers who carried out [the study](#) told Tech Xplore. "Most of the work we do is on the experimental side, utilizing the mouse as a model system and techniques that range from molecular-genetic to functional and anatomical."

This study is part of a larger project, which also includes "[Exploring Brain-wide Development of Inhibition through Deep Learning](#)," a study in which Karayannis and his colleagues use deep learning algorithms to comprehensively track the so-called inhibitory neurons over time in order to gauge the development of capabilities of the brain at specific points in time.

To do that, they tried to devise a [method](#) that could accurately delineate and segment different brain regions in experimental images of the developing [mouse brain](#), to then extract information about the location and density of inhibitory neurons.



**Fig. 2 | Performance comparison of *SeBRe* with commonly used brain registration methods. a**, Performance of *SeBRe* in predicting brain regions on randomly selected lateral and medial brain sections in comparison with ndreg and elastix methods. **b**, Plot of MSE scores for all brain sections in the testing dataset, for *SeBRe*, ndreg, and elastix. **c**, Mean MSE scores for *SeBRe*, ndreg and elastix, on the complete testing dataset. Credit: Theofanis Karayannis et al.

Performance comparison of *SeBRe* with commonly used brain registration methods. a. Performance of *SeBRe* in predicting brain regions on randomly selected lateral and medial brain sections in comparison with ndreg and elastix methods. b. Plot of Mse scores for all brain sections in the testing dataset, for *SeBRe*, ndreg, and elastix. c. Mean MSE scores for *SeBRe*, ndreg and elastix, on the complete dataset. Credit: Theofanis Karayannis et al.

"By utilizing the computational skills of Asim Iqbal, a PhD student in my lab, we sought out to first test the utility of a few image-registration based methods that have been gaining attention in neuroscience studies over the last year," explains Karayannis. "We quickly realized that existing techniques are suboptimal for cases where the tissue sections are rotated or when their geometry is compromised due to methodological issues, for

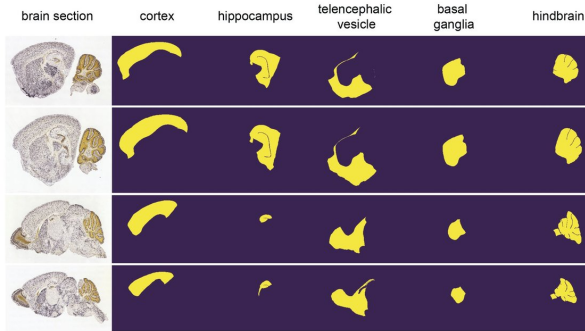
example during brain tissue slicing."

After observing the limitations of existing image registration-based methods, the researchers set out to develop a new deep learning tool that can produce reliable results regardless of possible scale, rotation and morphological issues affecting sections of brain tissues.

This method, called *SeBRe* (Segmenting Brain Regions), allows for registration through segmenting brain regions of interest, which could assist scientists in their studies of brain regions across a variety of development stages. *SeBRe* takes brain sections, as well as the binary masks of brain regions, as input for training.

The researchers trained their neural network on brain sections of 14 days old mice, for two genetic markers. They then tested its performance in generating anatomical masks of previously unidentified sections of the brain of 4, 14, 28, and 56 days old mice, across a range of neuronal markers. *SeBRe* outperformed all existing brain registration methods, providing the minimum mean squared error (MSE) score on a mouse brain dataset.

"Our study provides a novel, robust approach to the current affine and non-affine methods for brain area registration," says Karayannis. "It also points at the applicability of an artificial intelligence-based method in segmenting brain structures of interest."



**Supplementary Figure 2 | Masks of brain regions on lateral and medial sagittal sections of P14 GAD1 and VGAT ground-truth mouse brains.** The first two rows of column 1 show the lateral whereas the last two rows show the medial brain sections. Column 2-6 show the ground-truth masks of five example brain regions. The regions vary in shape and size as we move from lateral to medial (e.g. compare hippocampus across column 3, for all brain sections).

areas with complex 3-D structures.

Karayannis and his colleagues are now planning to scale their method to segment various sub-regions in the mouse and human brain, by using more annotated data to further optimize the performance of their algorithm.

"Hopefully, this study is the beginning of a path that will ultimately allow us and the community to explore alterations in brain structure and function, not only across different developmental stages, but also in devastating [brain](#) disorders, helping to identify new biomarkers and form novel hypotheses about disease generation and progression," says Karayannis.

**More information:** Developing Brain Atlas through Deep Learning, arXiv:1807.03440 [cs.CV] [arxiv.org/abs/1807.03440](https://arxiv.org/abs/1807.03440)

Exploring Brain-wide Development of Inhibition through Deep Learning, arXiv:1807.03238 [cs.CV] [arxiv.org/abs/1807.03238](https://arxiv.org/abs/1807.03238)

© 2018 Tech Xplore

Masks of brain regions on lateral and medial sagittal sections of P14 GAD1 and VGAT ground-truth mouse brains. The first two rows of column 1 show the lateral whereas the last two rows show the medial brains sections. Column 2-6 show the ground-truth masks of five example brain regions. The regions vary in shape and size as we move from lateral to medial (e.g. compare hippocampus across column 3, for all brain sections). Credit: Theofanis

In future, SeBRe could be instrumental in tracking and quantifying anatomical changes in the brain during development, as well as identifying other meaningful information, such as what genes are expressed during the development of a mouse brain and their spatio-temporal qualities.

So far, their [deep learning](#) algorithm has only been trained on a few [brain regions](#) and the researchers found that it performed sub-optimally on other

APA citation: Developing brain atlas using deep learning algorithms (2018, July 23) retrieved 23 October 2021 from <https://techxplore.com/news/2018-07-brain-atlas-deep-algorithms.html>

*This document is subject to copyright. Apart from any fair dealing for the purpose of private study or research, no part may be reproduced without the written permission. The content is provided for information purposes only.*