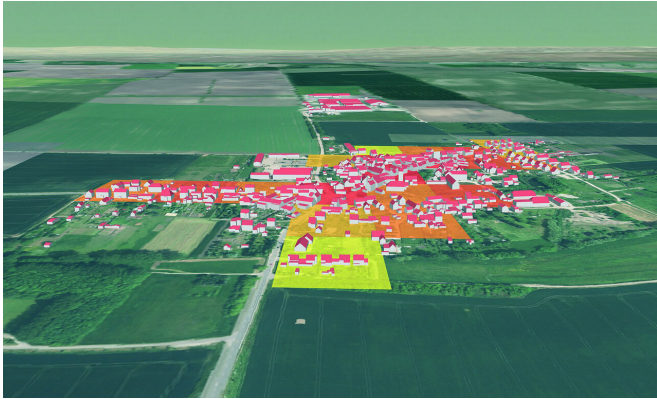


# Suitable energy mix for smaller communities

4 December 2019



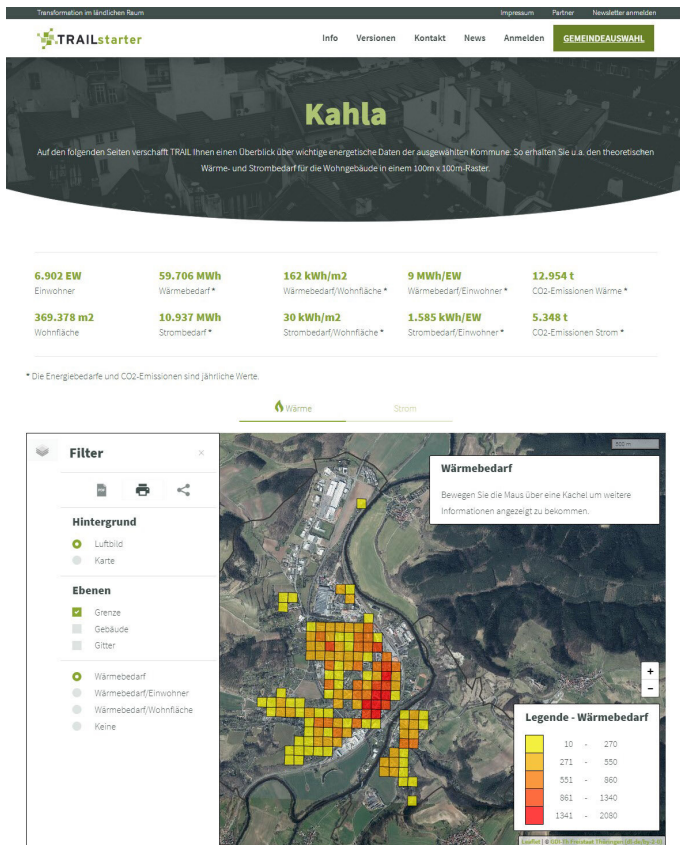
Visualization of heating demand for the municipality of Neumark (486 inhabitants) in a 100 x 100 m grid. Dark colors indicate high energy demand. The results were estimated based on the building structures. Credit: Open Data Thüringen | virtualcitySYSTEMS GmbH | Layout: Daniel Cebulla (JENA-GEOS®-Ingenieurbüro GmbH)

## Software tool analyzes needs and possibilities

Researchers of the Advanced System Technology Branch of the Fraunhofer Institute for Optronics, System Technologies and Image Exploitation IOSB-AST have developed a [software tool](#) which analyzes the needs and opportunities for a special community. The optimization [tool](#) is one of the major outcomes of the project "Technological and Economic Energy Modeling—modTRAIL." "With our project, mayors of smaller communities can learn about technical possibilities available for the transition into a new energy economy and corresponding opportunities for funding—and the information they receive is tailored specifically to their community," says Liane Rublack, scientist at Fraunhofer IOBS-AST. "The tool uses a mixture of conventional and [renewable energy sources](#) to calculate the optimized solution for the heat and electricity generation of the community."

Solar thermal, geothermal, photovoltaic—what form of energy supply is most suitable for a particular municipality? Representatives of smaller communities are overwhelmed by a huge amount of information, which tends to exacerbate existing uncertainty. A new online tool from Fraunhofer is now helping to clarify this confusion. The tool calculates the optimal energy mix for each individual case, including funding possibilities available.

The transition to a new energy economy is imminent. However, representatives of small communities are often unable to envision exactly what is the best solution for them due to missing resources and know-how. Solar power, photovoltaics or geothermal? What is suitable for a community and to which percentage could each technology contribute to the community's energy needs? Are there any funding opportunities available?



the top priority? Or are the costs of purchasing the energy more important? Based on this prioritization, the software tool determines the mixture of energy and power plants. For example, this might be a combination of photovoltaic plants, battery and thermal storage systems, and combined heat and power plants. The output also includes the costs for installation and operation, the energy procurement costs, the amount of CO<sub>2</sub> emissions, and the funding possibilities available.

"With our optimization tool, we want to start the process and show the mayors of small communities the potential offered by renewable energy sources for their municipalities," explains Rublack. The researchers from Fraunhofer IOSB-AST used standard load profiles for households as well as the time series for renewable energy sources recorded by the German Meteorological Service—in this case, by the Thuringia weather station at Erfurt-Weimar for their software tool. For communities in Thuringia with fewer than 10,000 inhabitants, the necessary data is already stored in the system. Nevertheless, the tool can also be used in other German states with the corresponding data.

The innovative online tool TRAILstarter, can help to implement measures for the regional transition into a new energy economy. Credit: Fraunhofer IOSB-AST/Martin Käbller

In four model municipalities located in the German federal state of Thuringia with fewer than ten thousand inhabitants—namely, Kahla, Werther, Neumark and Großobringen—the researchers are already testing the tool. The procedure for decision-makers in the communities is the following: At first they have to insert the name of their municipality, whereupon they receive details about the electricity and heating demand in their locality. Afterwards, they specify their preferences for future power and heating supply. What technologies would they like to use, and which ones would they prefer to rule out? There are numerous options to choose from, including solar and wind power, battery and thermal storage units, condensing oil and gas boilers, air heat pumps and geothermal heat pumps. The tool also elicits the decision-makers' preferences regarding other factors. Is minimizing CO

### Lowering the barriers

The developed optimization model is an integral part of the online software of the "Transformation in Rural Areas" (TRAIL) joint research project. The specific goal of the project is to motivate a large number of smaller communities to engage fully with the questions of efficient energy supply by the help of the easy-to-use optimization tool. In particular, it lowers the barriers for the communities to start, which are due to limited human and financial resources. An online software tool was developed which generates initial statements about electricity and heating consumption of the community chiefly based on publicly available GIS data and census data and further existing data-bases. Furthermore, the optimization part generates recommendations for the [energy](#) transition procedure of the specific community.

Provided by Fraunhofer-Gesellschaft

APA citation: Suitable energy mix for smaller communities (2019, December 4) retrieved 21 May 2022 from <https://techxplore.com/news/2019-12-suitable-energy-smaller.html>

*This document is subject to copyright. Apart from any fair dealing for the purpose of private study or research, no part may be reproduced without the written permission. The content is provided for information purposes only.*