

New highly radioactive particles found in Fukushima

17 February 2021



Project team members survey soils in the Fukushima Daiichi Nuclear Exclusion Zone for Cs particles. Background shows an aquaculture site near the FDNPP that was destroyed by the 2011 Tsunami. Credit: Satoshi Utsunomiya

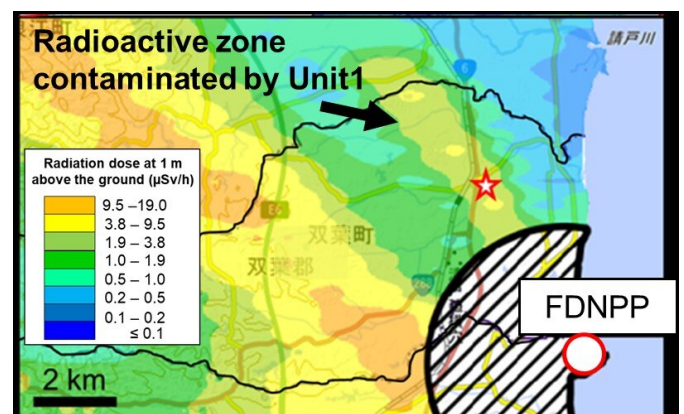
The 10 year anniversary of the Fukushima Daiichi nuclear accident occurs in March. Work just published in the *Journal Science of the Total Environment* documents new, large (> 300 micrometers), highly radioactive particles that were released from one of the damaged Fukushima reactors.

Particles containing radioactive cesium ($^{134+137}\text{Cs}$) were released from the damaged reactors at the Fukushima Daiichi Nuclear Power Plant (FDNPP) during the 2011 nuclear disaster. Small (micrometer-sized) particles (known as CsMPs) were widely distributed, reaching as far as Tokyo. CsMPs have been the subject of many studies in recent years. However, it recently became apparent that larger (>300 micrometers) Cs-containing particles, with much higher levels of activity ($\sim 10^5$ Bq), were also released from [reactor unit 1](#) that suffered a hydrogen explosion. These particles were deposited within a narrow zone that stretches ~ 8 km north-northwest of the reactor site.

To date, little is known about the composition of these larger particles and their potential environmental and human health impacts.

Now, work just published in the journal *Science of the Total Environment* characterizes these larger particles at the atomic-scale and reports high levels of activity that exceed 10^5 Bq.

The particles, reported in the study, were found during a survey of surface soils 3.9 km north-northwest of reactor unit 1.



A map showing the location of the Fukushima Daiichi Nuclear Power Plant (FDNPP) and the sampling site against the radiation dose at 1 m above the ground as of November, 2017. The red star represents the location of the soil sample containing the highly radioactive particles. Credit: Satoshi Utsunomiya et al.

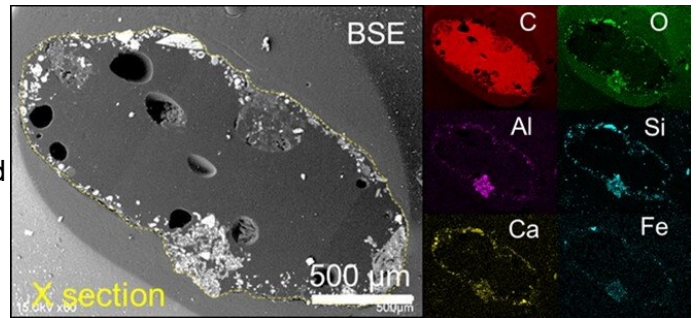
From 31 Cs-particles collected during the sampling campaign, two have given the highest ever particle-associated $^{134+137}\text{Cs}$ activities for materials emitted from the FDNPP (specifically: 6.1×10^5 and 2.5×10^6 Bq, respectively, for the particles, after decay-correction to the date of the FDNPP accident).

The study involved scientists from Japan, Finland,

France, the UK, and U.S., and was led by Dr. Satoshi Utsunomiya and graduate student Kazuya Morooka (Department of Chemistry, Kyushu University). The team used a combination of advanced analytical techniques (synchrotron-based nano-focus X-ray analysis, secondary ion mass spectrometry, and high-resolution transmission electron microscopy) to fully characterize the particles. The particle with a $^{134+137}\text{Cs}$ activity of 6.1×10^5 Bq was found to be an aggregate of smaller, flakey silicate nanoparticles, which had a glass like structure. This particle likely came from reactor building materials, which were damaged during the Unit 1 hydrogen explosion; then, as the particle formed, it likely adsorbed Cs that had had been volatilized from the reactor fuel. The $^{134+137}\text{Cs}$ activity of the other particle exceeded 10^6 Bq. This particle had a glassy carbon core and a surface that was embedded with other micro-particles, which included a Pb-Sn alloy, fibrous Al-silicate, Ca-carbonate / hydroxide, and quartz.

The composition of the surface embedded micro-particles likely reflect the composition of airborne particles within the reactor building at the moment of the hydrogen explosion, thus providing a forensic window into the events of March 11th 2011.

Utsunomiya added, "The new particles from regions close to the damaged reactor provide valuable forensic clues. They give snap-shots of the atmospheric conditions in the reactor building at the time of the hydrogen explosion, and of the physio-chemical phenomena that occurred during reactor meltdown." He continued, "whilst nearly ten years have passed since the accident, the importance of scientific insights has never been more critical. Clean-up and repatriation of residents continues and a thorough understanding of the contamination forms and their distribution is important for risk assessment and public trust."

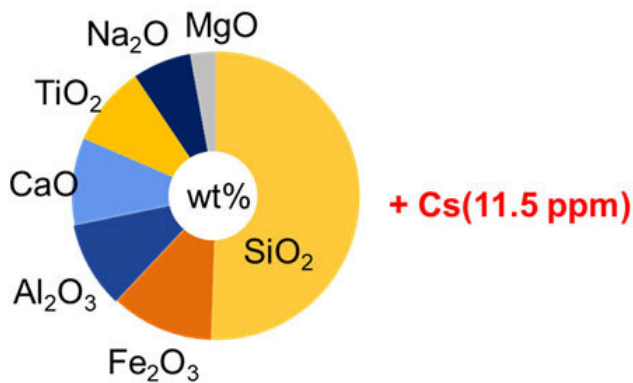


Back-scattered electron (BSE) image of the cross section of the most radioactive particle (FTB26) accompanied by elemental maps of its major constituents. Credit: Satoshi Utsunomiya et al.

Professor Gareth Law (co-author, University of Helsinki) added, "Clean-up and decommissioning efforts at the site face difficult challenges, particularly the removal and safe management of accident debris that has very high levels of radioactivity. Therein, prior knowledge of debris composition can help inform safe management approaches."

Given the high radioactivity associated with the new particles, the project team were also interested in understanding their potential health / dose impacts.

Dr. Utsunomiya stated, "Owing to their large size, the health effects of the new particles are likely limited to external radiation hazards during static contact with skin. As such, despite the very high level of activity, we expect that the particles would have negligible health impacts for humans as they would not easily adhere to the skin. However, we do need to consider possible effects on the other living creatures such as filter feeders in habitats surrounding Fukushima Daiichi. Even though ten years have nearly passed, the half-life of ^{137}Cs is ~30 years. So, the activity in the newly found highly [radioactive particles](#) has not yet decayed significantly. As such, they will remain in the environment for many decades to come, and this type of particle could occasionally still be found in radiation hot spots."



A pie diagram presenting the main average composition of the airborne microparticles embedded in the surface of carbon core. Credit: Satoshi Utsunomiya et al.

Professor Rod Ewing (co-author from Stanford University) stated, "This paper is part of a series of publications that provide a detailed picture of the material emitted during the Fukushima Daiichi reactor meltdowns. This is exactly the type of work required for remediation and an understanding of long-term health effects."

Professor Bernd Grambow (co-author from IMT Atlantique) added "the present work, using cutting-edge analytical tools, gives only a very small insight in the very large diversity of particles released during the [nuclear accident](#), much more work is necessary to get a realistic picture of the highly heterogeneous environmental and health impact."

More information: Kazuya Morooka et al, New highly radioactive particles derived from Fukushima Daiichi Reactor Unit 1: Properties and environmental impacts, *Science of The Total Environment* (2021). [DOI: 10.1016/j.scitotenv.2021.145639](#)

Provided by University of Helsinki

APA citation: New highly radioactive particles found in Fukushima (2021, February 17) retrieved 22 September 2021 from <https://techxplore.com/news/2021-02-highly-radioactive-particles-fukushima.html>

This document is subject to copyright. Apart from any fair dealing for the purpose of private study or research, no

part may be reproduced without the written permission. The content is provided for information purposes only.